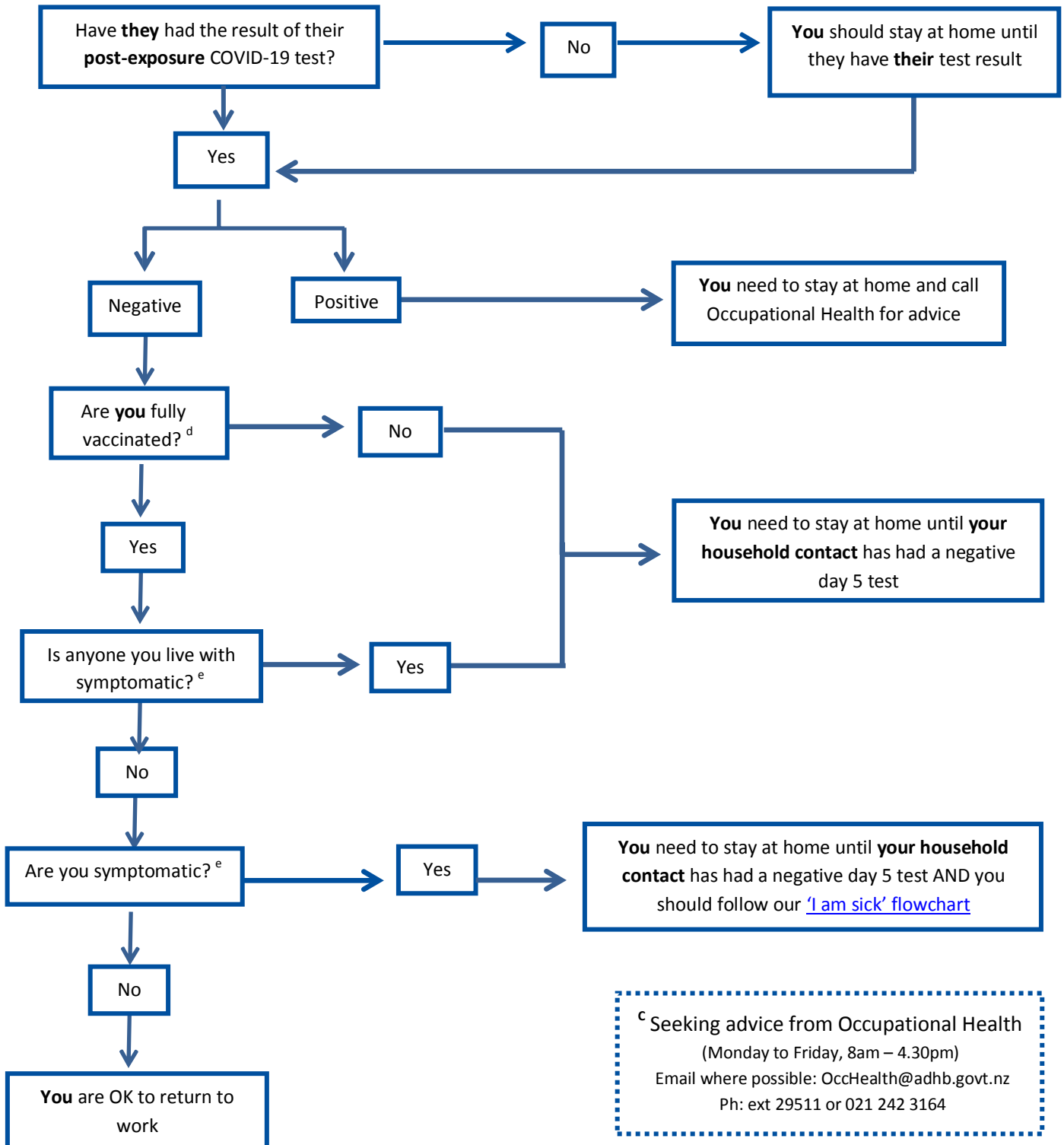


Someone I live with is a close contact ^a OR was at a location of interest ^b – do I need stay home?



^c Seeking advice from Occupational Health
 (Monday to Friday, 8am – 4.30pm)
 Email where possible: OccHealth@adhb.govt.nz
 Ph: ext 29511 or 021 242 3164

^a **Close contact:** Contacts who attended one of the locations in New Zealand during the relevant times or someone who is deemed a close contact by a public health official.
^b **Location of Interest:** Locations of interest for people who may have been contacts of COVID-19 cases in the community. Find these locations of the [Ministry of Health website](#).
^d **Fully vaccinated** means you have had 2 doses of Pfizer BioNTech vaccine
^e **COVID-19 symptoms:** Fever, runny nose, sore throat, new or worsening cough, loss of smell or taste, shortness of breath

